

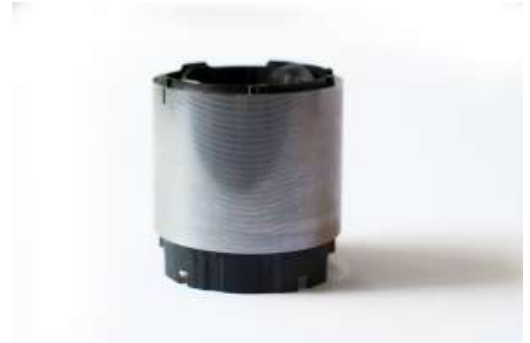
Start–stop starter



Print Date: 2024–08–30

Benefits

- High heat resistance
- High Flow and thin wall electrical insulation UI1446 Class H @ 0,35 mm
- No part cracking under copper winding forces
- E–motor insulation



Details

The future of mobility is rapidly changing. The era of internal combustion engines as a single power source is ending, indicating a transformation that makes vehicles cleaner. To realize this transformation, automotive OEMs need advanced materials that make electric vehicles safer, lighter and more sustainable. Our portfolio of tough yet lightweight materials are driving manufacturers to produce automotive components that are extremely light, reduce friction and operate in extreme environments – particularly at very high temperatures – with drastically smaller carbon footprints.

Products

Stanyl® TW200F6
PA46–GF30



这里提到的所有商标都是 Envalior 的商标。
 卖方独家声明并保证，在卖方交付之日，产品应符合商定的规格。卖方不做出任何其他明示或暗示的陈述或保证。
 卖方对客户产品的设计不承担任何责任，客户有责任确定卖方的产品是安全的，符合应用法律和法规，并且在技术上或其他方面适合其预期用途。
 卖方不认可或声称其产品适合特定应用，并且否认在这方面的每一项陈述或保证，无论是明示的还是暗示的。

典型值仅供参考，不应被视为具有约束力的规格。产品中的着色剂或其他添加剂可能会导致典型值发生变化。

版权所有 © Envalior 2024。保留所有权利。未经 Envalior 事先书面许可，不得以任何形式或任何方式复制、分发或传播信息的任何部分，包括复印、记录或其他电子或机械方法。